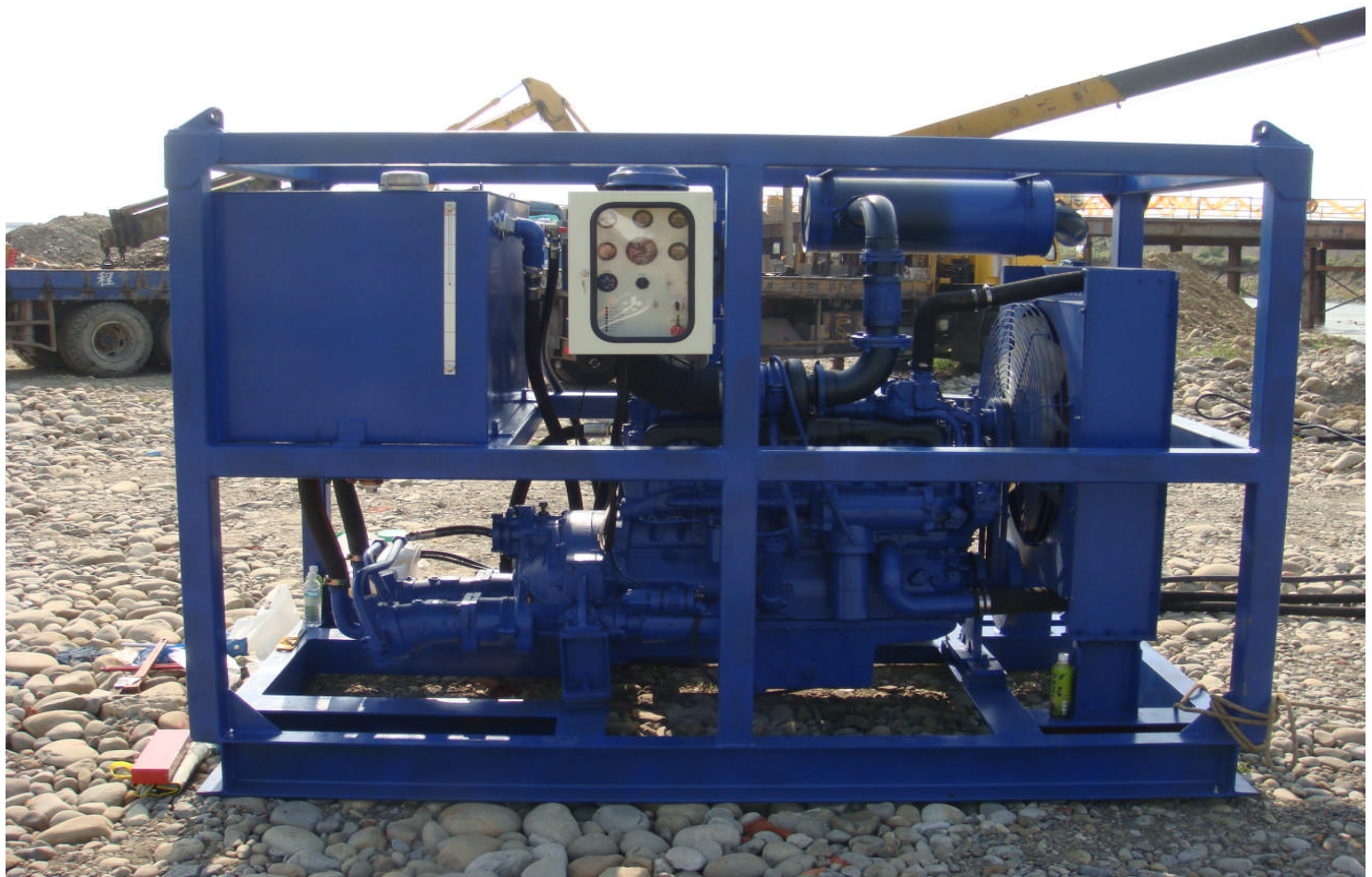


DIESEL DRIVEN HYDRAULIC POWER PACK

Specifications	MODEL SPP-300
DESCRIPTION	DIESEL DRIVEN HYDRAULIC POWER PACK 350 Ltr/min at 350 BAR
ENGINE	CUMMINS NT855 310HP AT 1500 RPM
HYD. PUMP	2 UNITS A7V107 BOSCH-REXROTH DRIVEN THROUGH GEARBOX.
ELECTRICS	24VDC CONTROL SYSTEM PC BOARD SAFETY SHUT DOWN
HYD. FILTERS	SUCTION / HP PRESS / RETURN LINE FILTERS
HYD. CONTROL	MANIFOLD WITH RELIEF / BYPASS / CHECK VALVES / 24V SPOOL VALVE
HYD. TANK	800 LTR WITH FILLER BREATHER
HYD. CONNECT.	2 x 1-1/2" SUPPLY / RETURN + 1" DRAIN LINE
DIMENSION	450cm x 165cm x 210cm
WEIGHT	3,500 KGS



Note : Specifications subject to change according to final project specification design.

Manufacture, Sales and Distribution of Contractor Pumps & Dredging Equipment.